

## URBAN AND SOCIAL CONTEXT

The area planned for restoration in the local community Bukovac is the urban pocket across the Infirmary, a parcel parallel to Kralja Petra I Street. Located in a small village, surrounded by single – family houses, the subject location is planned for a small public square with citizens of all ages as expected users. With its immediate surroundings, the neighboring parcel planned for reconstruction of the green market is recognized as a great importance to the local community and it is taken as a leading point for the development of the proposed concept for revitalization of this urban pocket. The proposed functional, spatial and aesthetic transformation of this socially important fragment should add a new value, but also contribute to a significant improvement in the performative properties of the site itself.

## SPATIAL CONCEPT

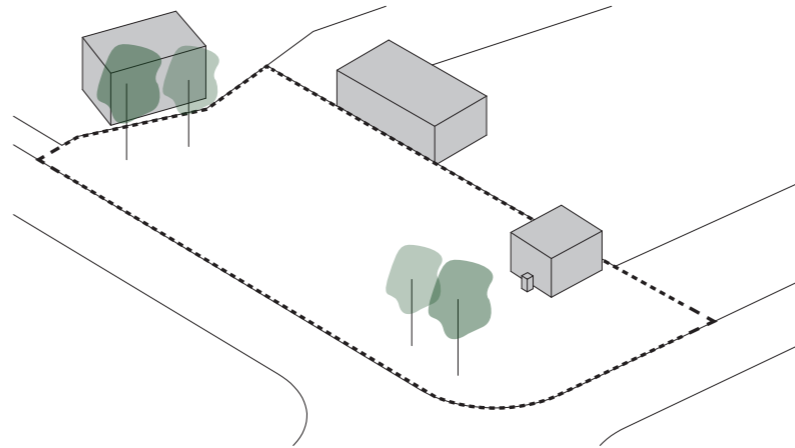
Following the analysis of the urban and social context, defining the axis of existing and potential movement through the location is taken as first constitutional element of the proposed concept, since the movement of the potential users is the crucial part of every public space. The first axis represents the existing pedestrian movement along the street corner. Having in mind the planned restoration of the neighboring parcel and its dual use as a market (on market days) and as arranged public space (other days), the proposed axes of movement through the subject location intend to ensure continuous and uninterrupted connections with the immediate surroundings. The perpendicular intersection of these two main communication axes that penetrate the location, shapes the heart of the project proposal – the square. In order to keep the accessibility and yet to ensure its safety, the central gathering space is attached to the main pedestrian axes deep into the parcel, pulled away from the street and surrounded by green buffer zone. The main idea of this open multifunctional space is to fulfil the needs of the local community. By transforming the location and enabling citizens of all ages to spend their time in a space suitable for all kinds of outdoor activities, cultural happenings, sport activities or everyday gatherings, the main goal of the proposal is to make this urban pocket represent the “heartbeat” of the local community Bukovac.

## MICRO - ZONING

The cut - outs made by positioning the pathways within the location define different spaces distinguished by specific atmospheres and the fixed urban furniture is carefully positioned in order to allow multifunctional uses. At the same time you can see someone reading a book by the quiet and colourful flower garden, little kids playing in the sand while their grandparents keep an eye on them sitting on the benches beside, teenagers roller skating on the wide pathways, neighbours chatting or playing chess under the big natural shadow by the drinking fountain and street musicians playing on the open square with public sitting on the curved benches. The multifunctional central gathering space not only can be used by the local Cultural-Artistic society for their performances, but also for other musical and cultural performances, or sport activities such as group aerobic exercises.

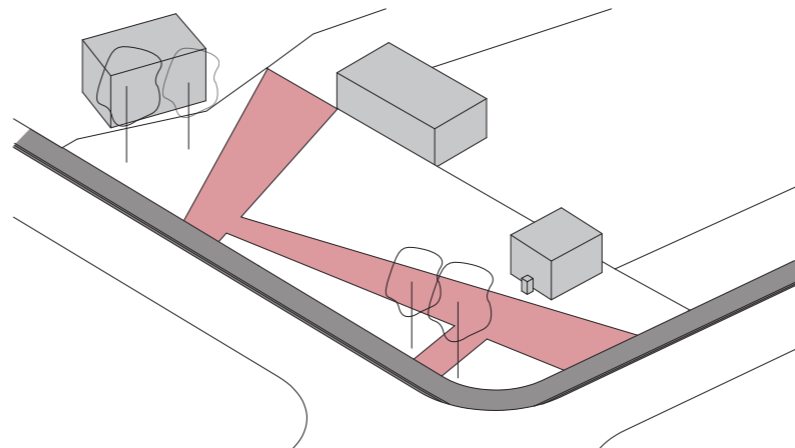
### 1. EXISTING SITUATION

- keeping the existing trees
- cleaning the site

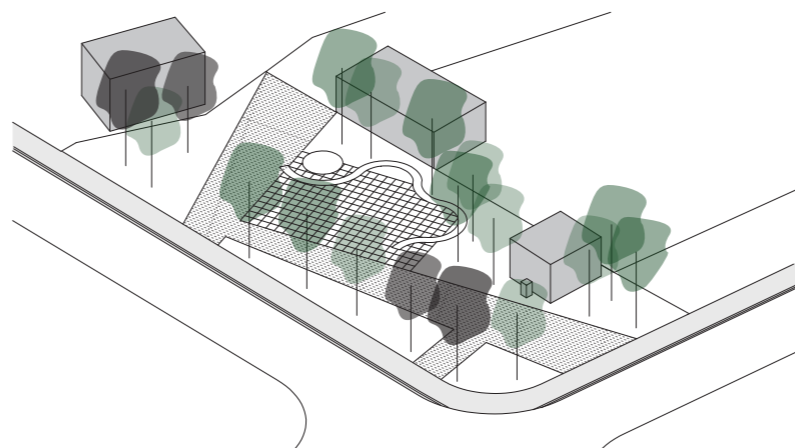


### 3. PEDESTRIAN SIDEWALK AND PATHWAYS

- continuous and uninterrupted connections with the immediate surroundings
- ensure accesibility and safety

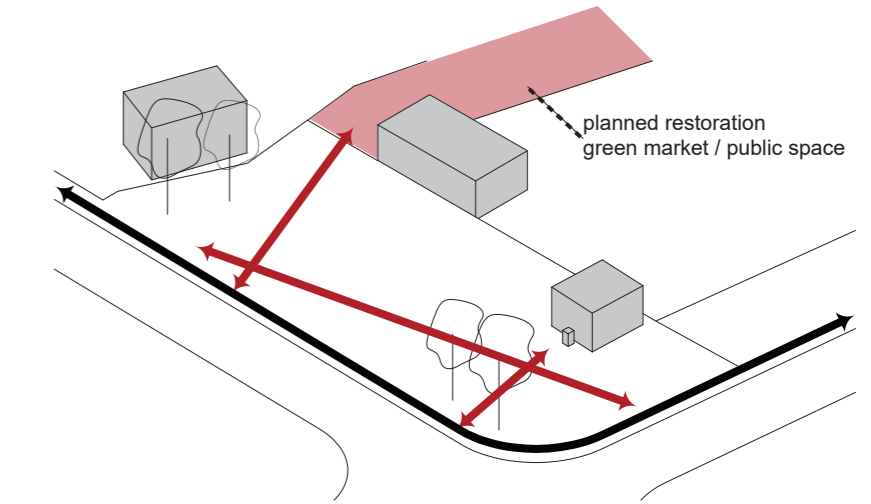


### 5. PAVING AND ADDITIONAL PLANTINGS



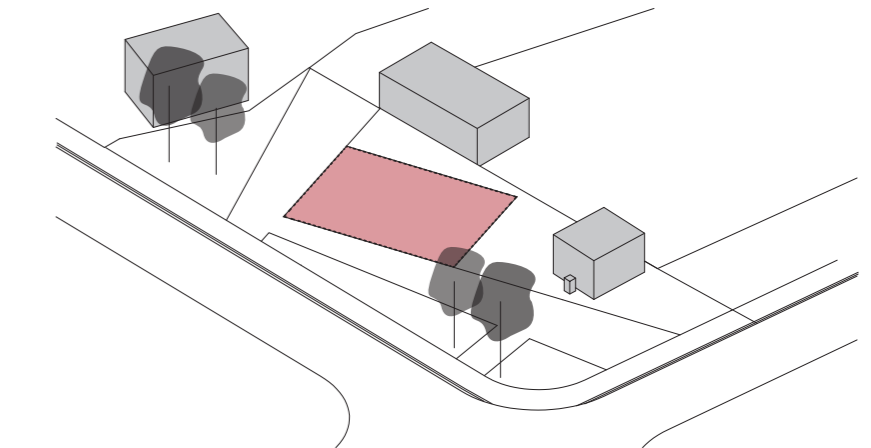
### 2. CIRCULATION AXES

- ←→ existing pedestrian circulation
- ←→ planned additional pedestrian circulation

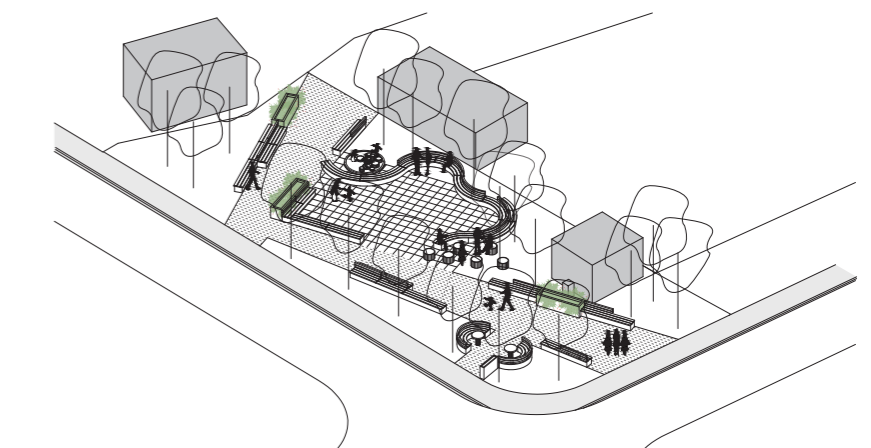


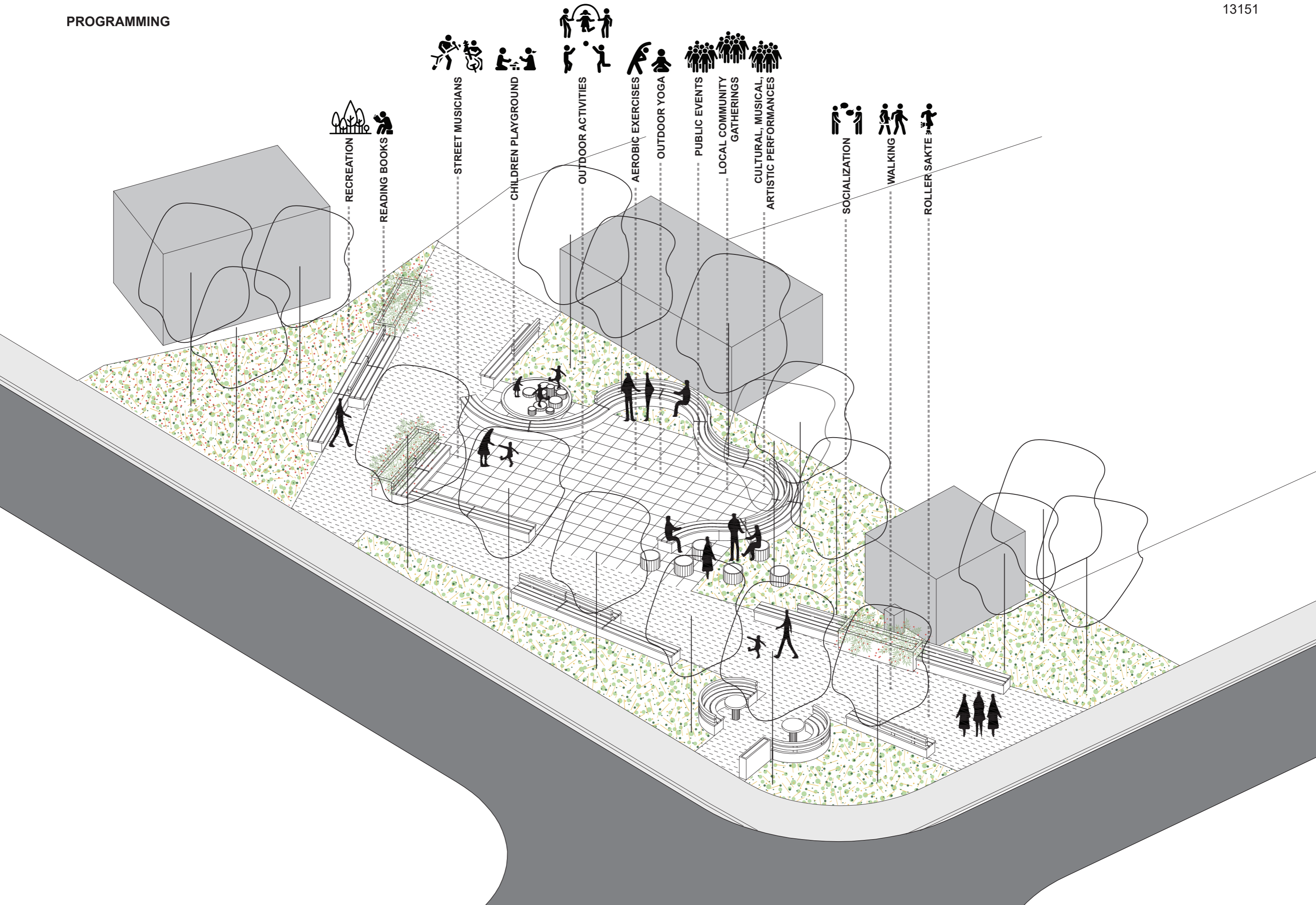
### 4. THE CENTRAL GATHERING SPACE

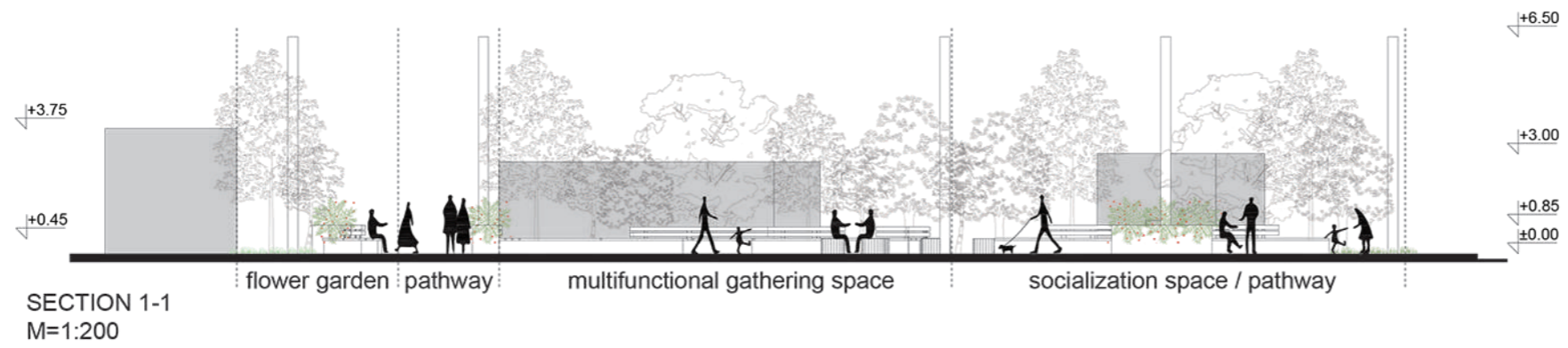
- multifunctional space:  
outdoor activities, cultural happenings,  
sport activities, everyday gatherings




### 6. THE BUKOVAC'S "HEARTBEAT"







-  DECIDUOUS TREE
-  FLOWERS
-  GRASS
-  FLOWER GARDEN
-  SHRUBS FENCE
-  EXISTING OBJECT
-  GRANITE PAVING
-  RUBBER PAVERS
-  DRINKING FOUNTAIN
-  LIGHTS
-  TRASH CAN

PLAN  
M=1:200

green market / public space

dark - grey rectangular granite stone paving

concrete flower plot

children playground - fixed wooden logs sand

bench

double - sided bench

multifunctional gathering space rubber tiles paving 60x60cm

concrete flower plot

dark - grey rectangular granite stone paving

bench

mobile wooden logs transformable seating combinations (individual or group) can be used as chairs or tables

bench

flower garden

double - sided bench

bench

light

trash can

concrete flower plot

light

trash can

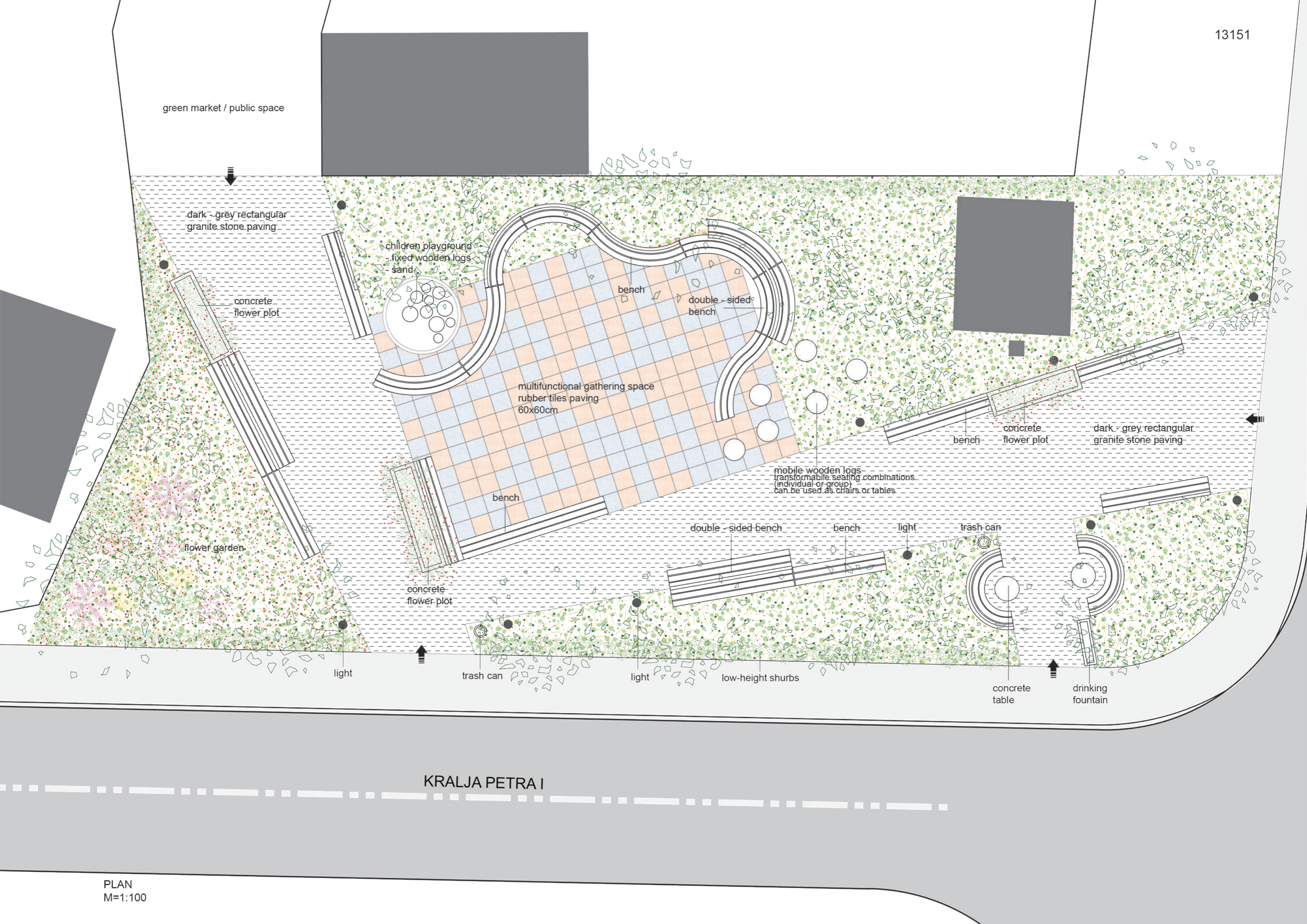
light

low-height shrubs

concrete table

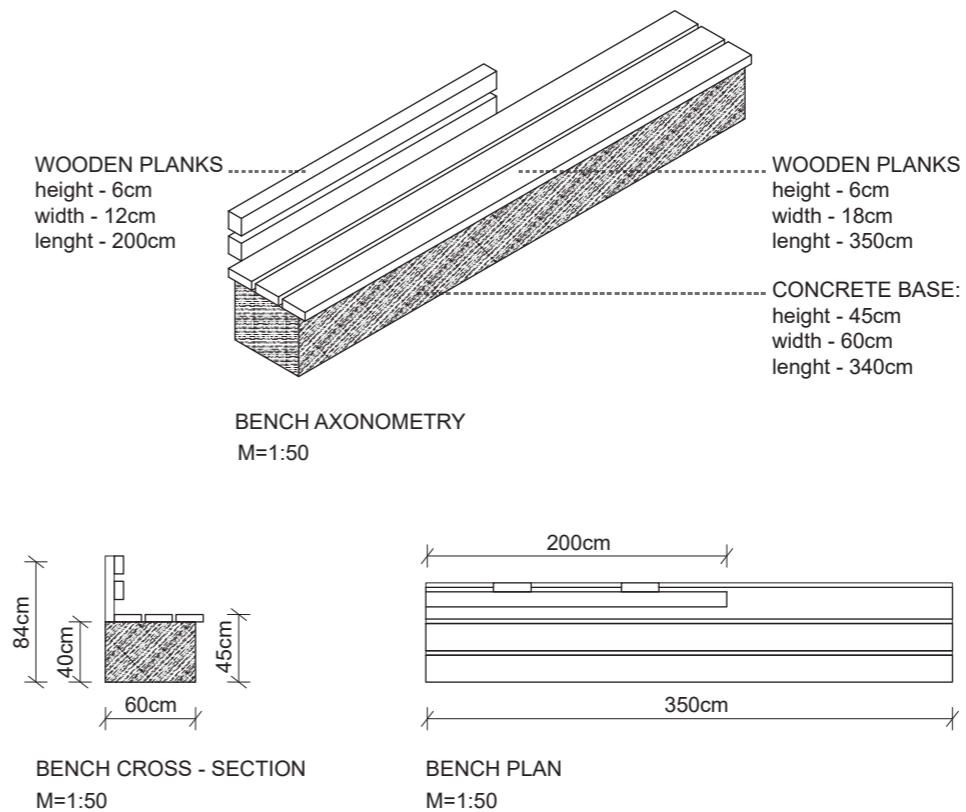
drinking fountain

KRALJA PETRA I



## TECHNICAL DESCRIPTION

After the planned tubing of the existing canal, the overgrown grass will be removed and the whole location will be cleaned. The 4 existing trees are being kept and additional 6 (six) middle – height, 8 (eight) high deciduous trees and different types of colourful flowers will be planted on the site. Low-height shrubs are planned along the sidewalk. Regarding the pavement, interlocking concrete pavers are used for the sidewalk, for the pathways through the location are used dark - grey granite rectangular stone, a material highly resistant to different weather conditions and also the dark colour is suitable for kid's chalk drawing. The pathways are dimensioned in a way to allow not only uninterrupted movement through the location, but they are wide enough to serve for additional programming such as children plays, rollerskating etc. The multifunctional square is paved with prefabricated blue and orange rubber tiles. This material ensures safety for kids since provides shock absorption and also is a low-maintenance surfacing solution. Street lights are positioned along the pathways as main lightning of the urban pocket and circular LED ambient ground lights. The urban furniture consists of fixed concrete benches with wooden seating boards, mobile wooden logs which can be used as chairs or table, concrete tables and concrete flower plots. With the reconstruction and the improved accessibility, the drinking fountain is integrated in the project getting a significant importance in general.



## SPECIFICATION OF MATERIALS AND ELEMENTS USED

### PLANTING AND PAVING:

grass area - 258m<sup>2</sup>  
flower garden - 65m<sup>2</sup>  
sand playground - 5m<sup>2</sup>  
dark - grey granite paving - 187m<sup>2</sup>  
rubber paving - 95m<sup>2</sup>  
middle - height deciduous tree - 6 pcs.  
high deciduous tree - 8 pcs.  
low - height shrubs - 55 pcs.

### ELEMENTS USED:

benches - 24 pcs.  
tables - 2 pcs.  
drinking fountain - 1 pcs.  
concrete flower plot - 3 pcs.  
mobile wooden log chairs - 6 pcs.  
fixed wooden logs - 10 pcs.  
street light - 11 pcs  
ambient LED light - 20 pcs.  
trash can - 2 pcs.

